

# Naval Ordnance Test Unit (NOTU)



**Jason J. Schneider, Captain, USN**



# NOTU's Mission

---

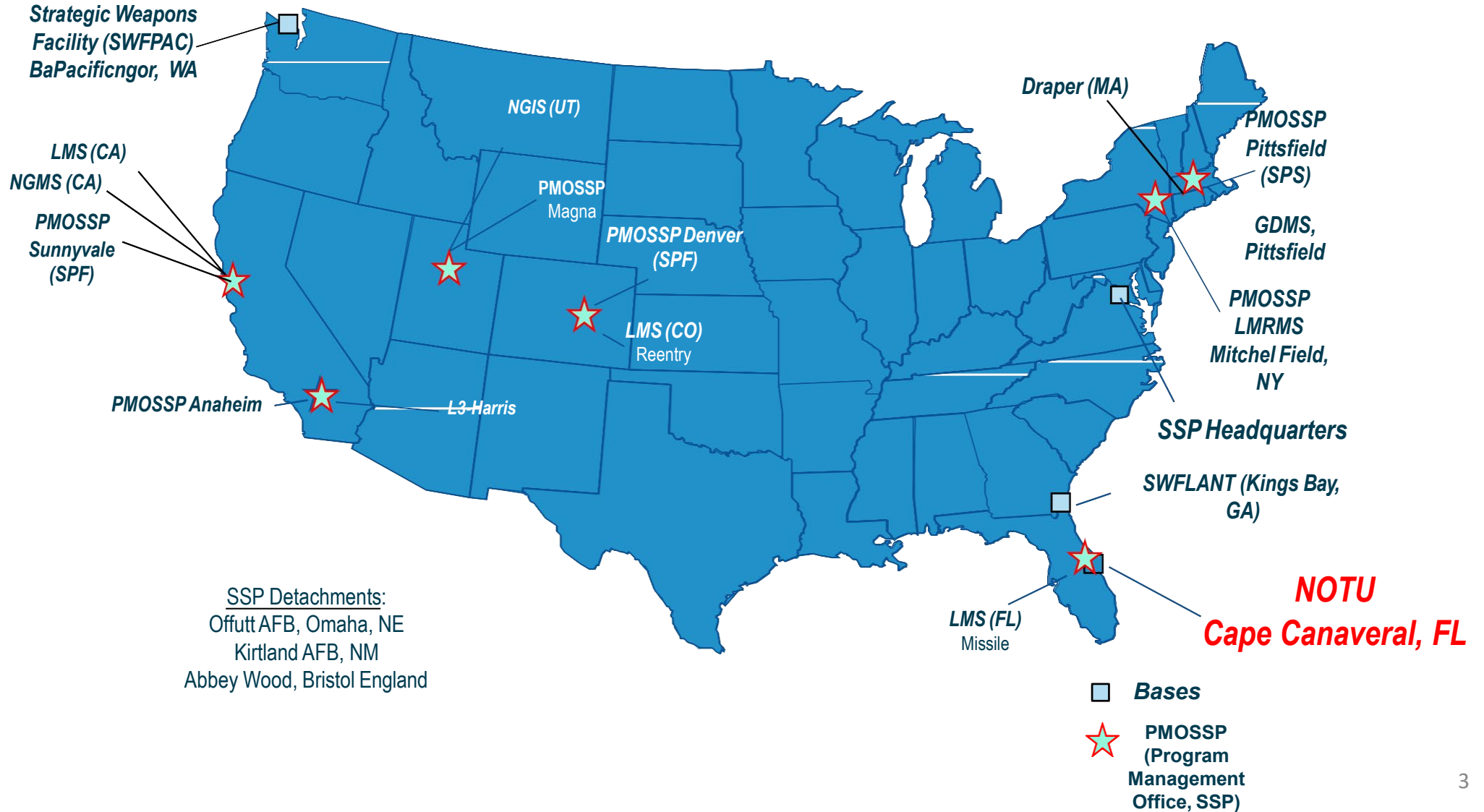
***1. Provide integrated testing, evaluation, and research and development solutions for the nation's sea-based Strategic Weapon Systems.***



***2. Operate the Navy port at Port Canaveral supporting Atlantic Fleet operations of US and Allied navies and assisting federal agencies for missions of national interest.***



# Strategic Systems Program (SSP) Enterprise





# NOTU Personnel / Facilities

---



## NOTU's Resources

### Manpower (1,300+)

- 125 Military
- 90 Civilians
- 1,100+ Contractors

### Footprint

- 239 structures
  - 66 administrative, production, operations, and storage buildings
  - Covering 126 acres



# Road to D5LE2 and X-Flight

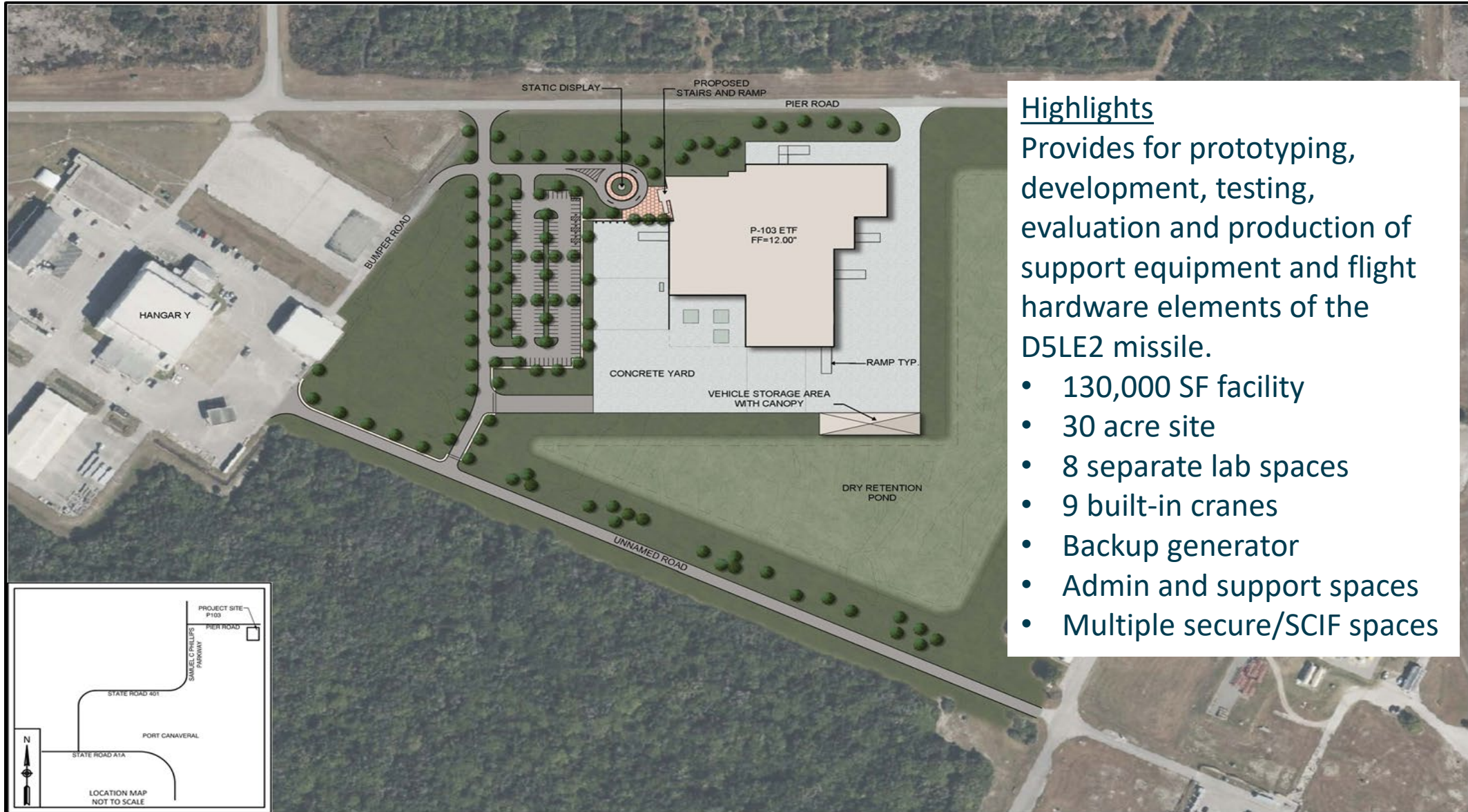
---

## Future Needs and Capabilities:

- **D5LE2 Missile Development and Launch Pad Upgrades**
- **Columbia/Dreadnought – unique requirements; fenders, fire water pump**
- **Engineering Test Facility – FY25 Military Construction (MILCON P103)**
  - **130K SF Lab and Production Facility**
- **Cape Railhead – FY27 Military Construction (MILCON P110)**
  - **Missile Motor Transfer Facility at Kennedy Space Center**
- **D5LE2 X-Flight Recapitalization – Multiple facility upgrades**



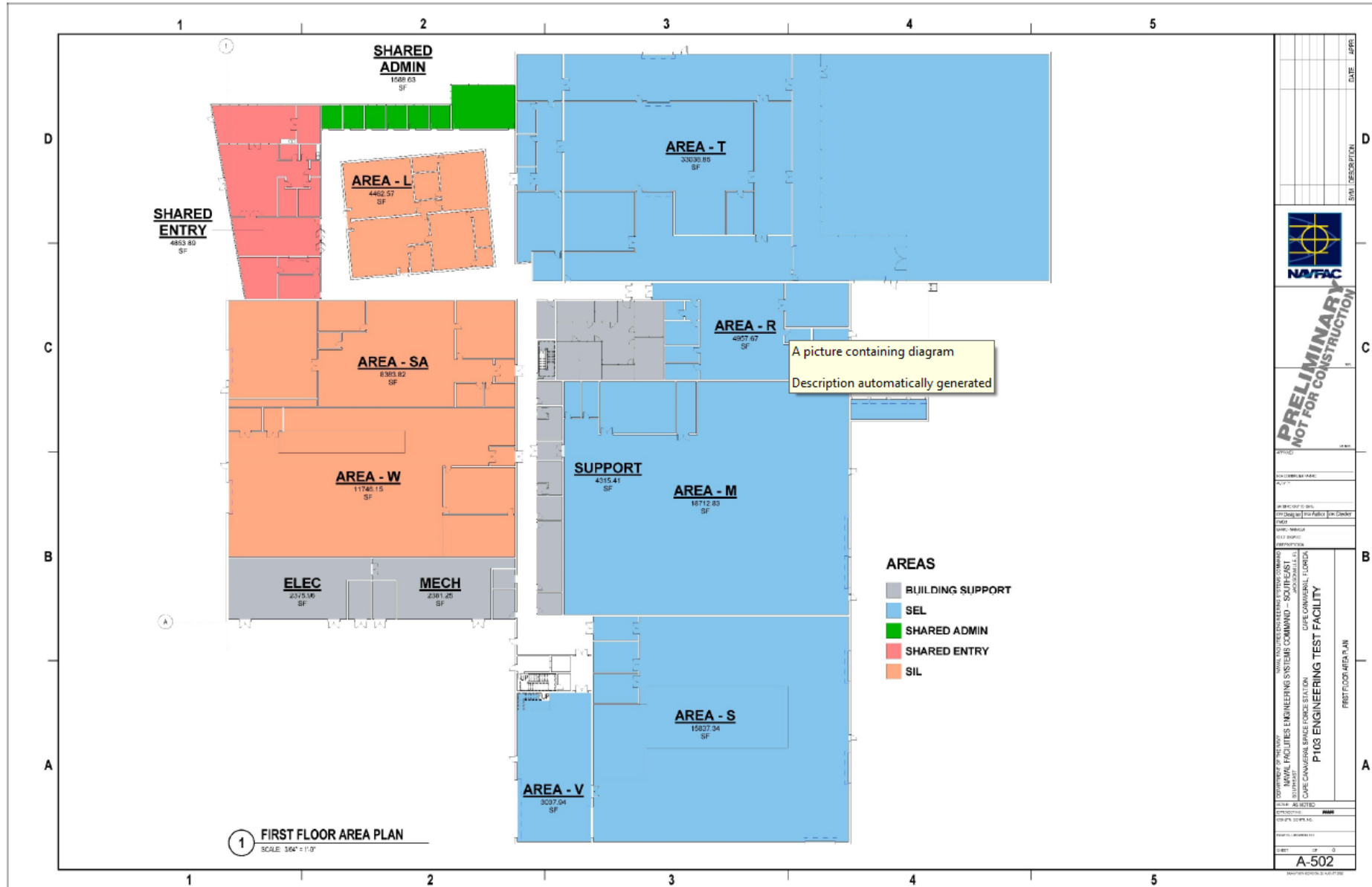
# Engineering Test Facility



- Highlights  
Provides for prototyping, development, testing, evaluation and production of support equipment and flight hardware elements of the D5LE2 missile.
- 130,000 SF facility
  - 30 acre site
  - 8 separate lab spaces
  - 9 built-in cranes
  - Backup generator
  - Admin and support spaces
  - Multiple secure/SCIF spaces



# Engineering Test Facility

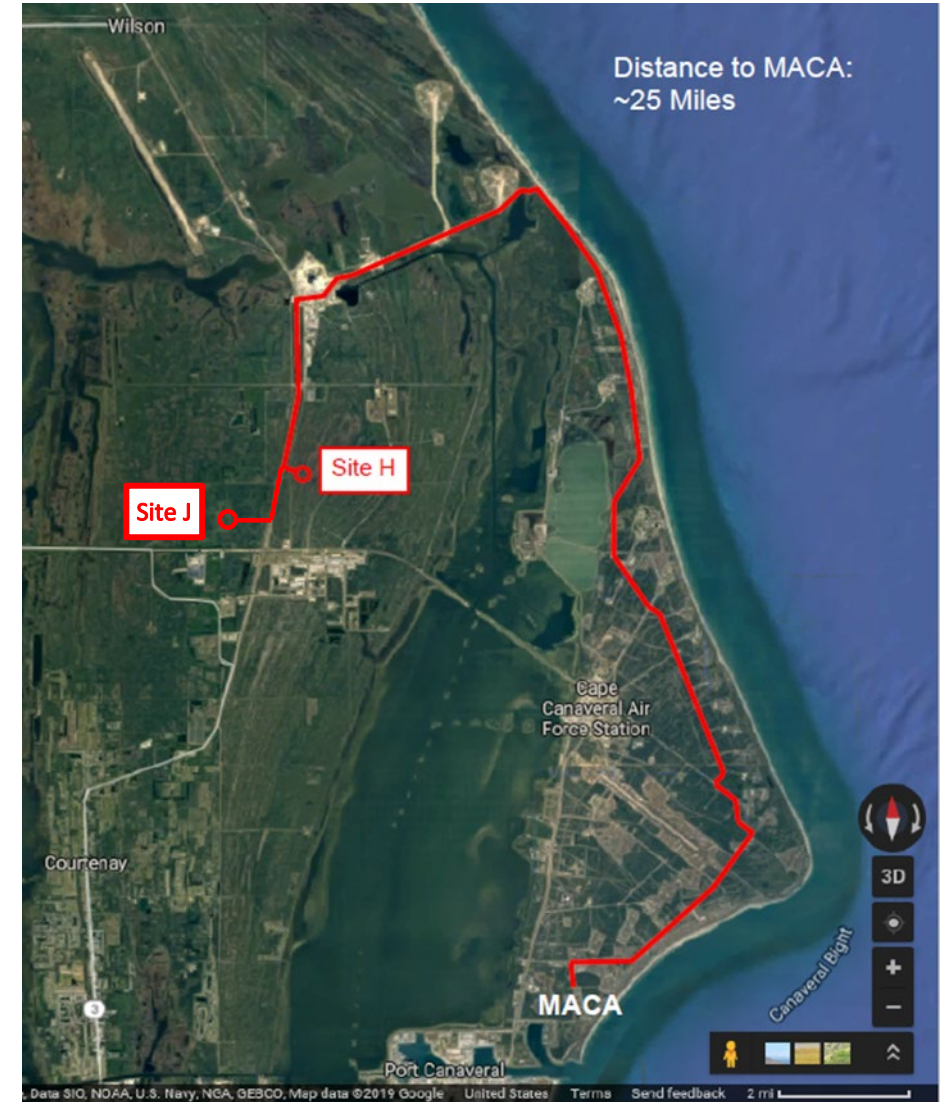
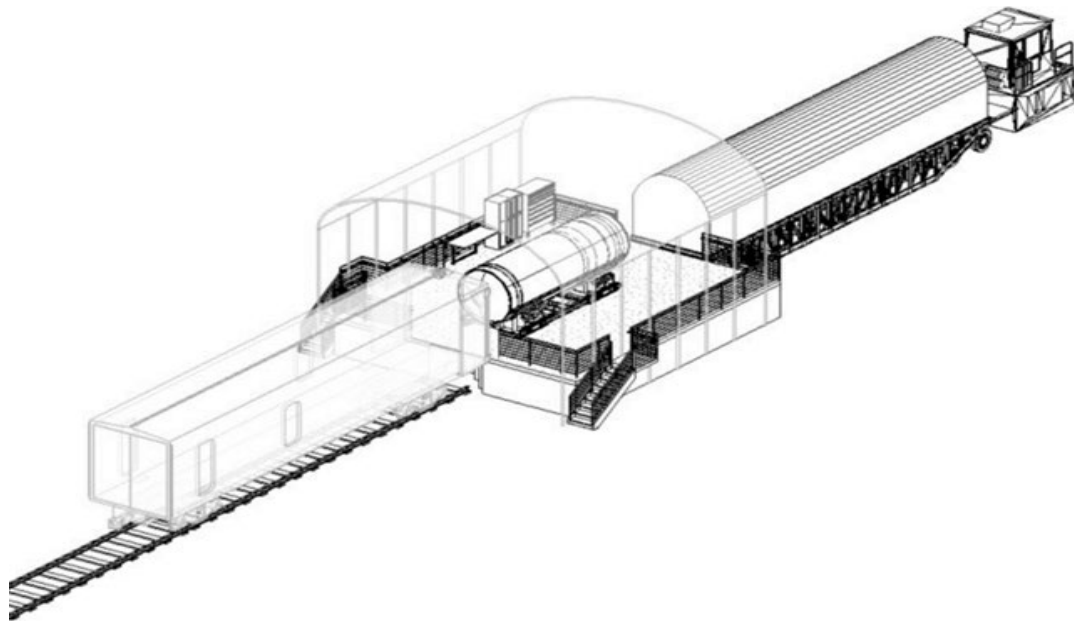


DATE	APPR.
DESCRIPTION	DATE
<b>PRELIMINARY NOT FOR CONSTRUCTION</b>	
PROJECT	
NO. COMPAR. DRAW.	
NO. OF SHEETS	
DATE OF SHEET	
BY	
CHECKED	
DESIGNED	
APP. OF THE WORK	
NAVAL FACILITIES ENGINEERING SYSTEMS COMMAND - SOUTH EAST 3030 CAMPBELL BLVD. S.W. CRESTVIEW, FLORIDA 32118	
<b>P103 ENGINEERING TEST FACILITY</b> FIRST FLOOR AREA PLAN	
DATE	
BY	
CHECKED	
DESIGNED	
APP. OF THE WORK	
<b>A-502</b>	



# Cape Railhead

**D5LE2 motors transported via commercial rail using Florida East Coast (FEC) to a railhead facility at NASA KSC. Motors would be offloaded from a DODX boxcar onto the facility transporter then moved to the Cape processing facility. KSC site decision expected 18 Jan 2024.**





# D5LE2 X-Flight Recapitalization

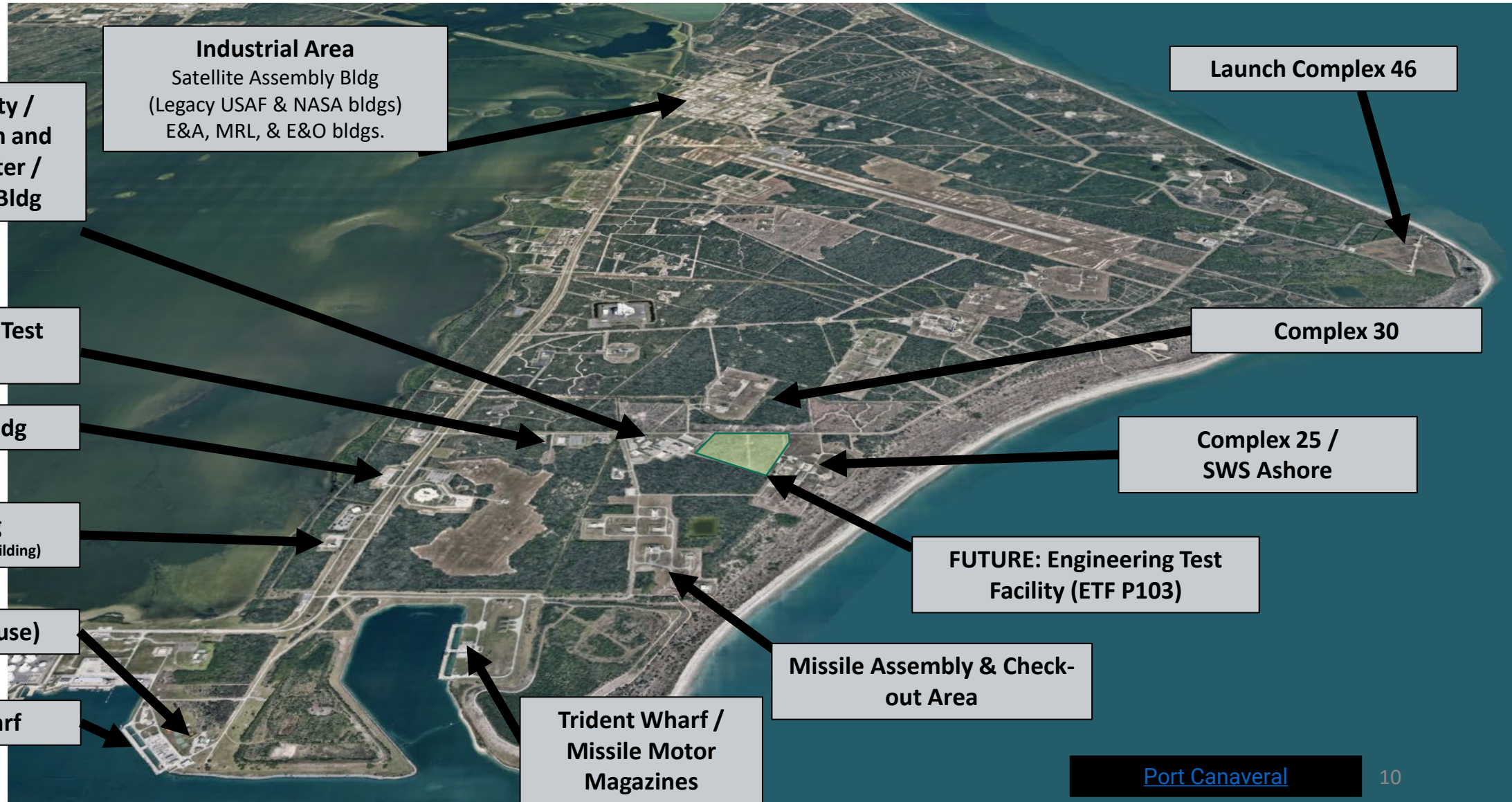
---

**Recapitalization plan to address infrastructure deficiencies for facilities and structures for X-Flight**

- **19 Facilities**
- **130 Separate Building System Upgrade Projects**
  - Roofing system replacement
  - Heating, Ventilation and Cooling (HVAC) replacement and upgrade
  - Fire protection system upgrades
  - Lighting
  - Restroom compliance upgrades
- **Haul Route Road Repairs**
- **Parking, Fencing, Guard Shack Replacement**



# Footprint at CCSFS







# NOTU: 1955 to 2084 (and beyond)

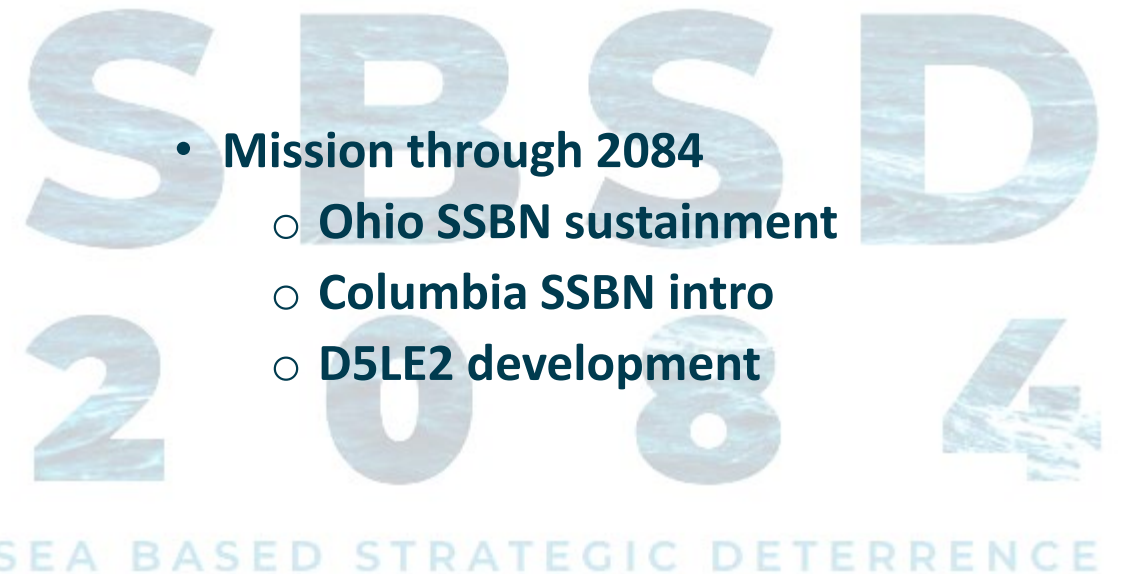
---

**Strategic Deterrence  
#1 Priority in DoD**



**Nuclear Deterrence in  
Top 10 DoD Management  
Challenges FY21**

**Columbia-Class SSBN  
#1 Acquisition in DoN**

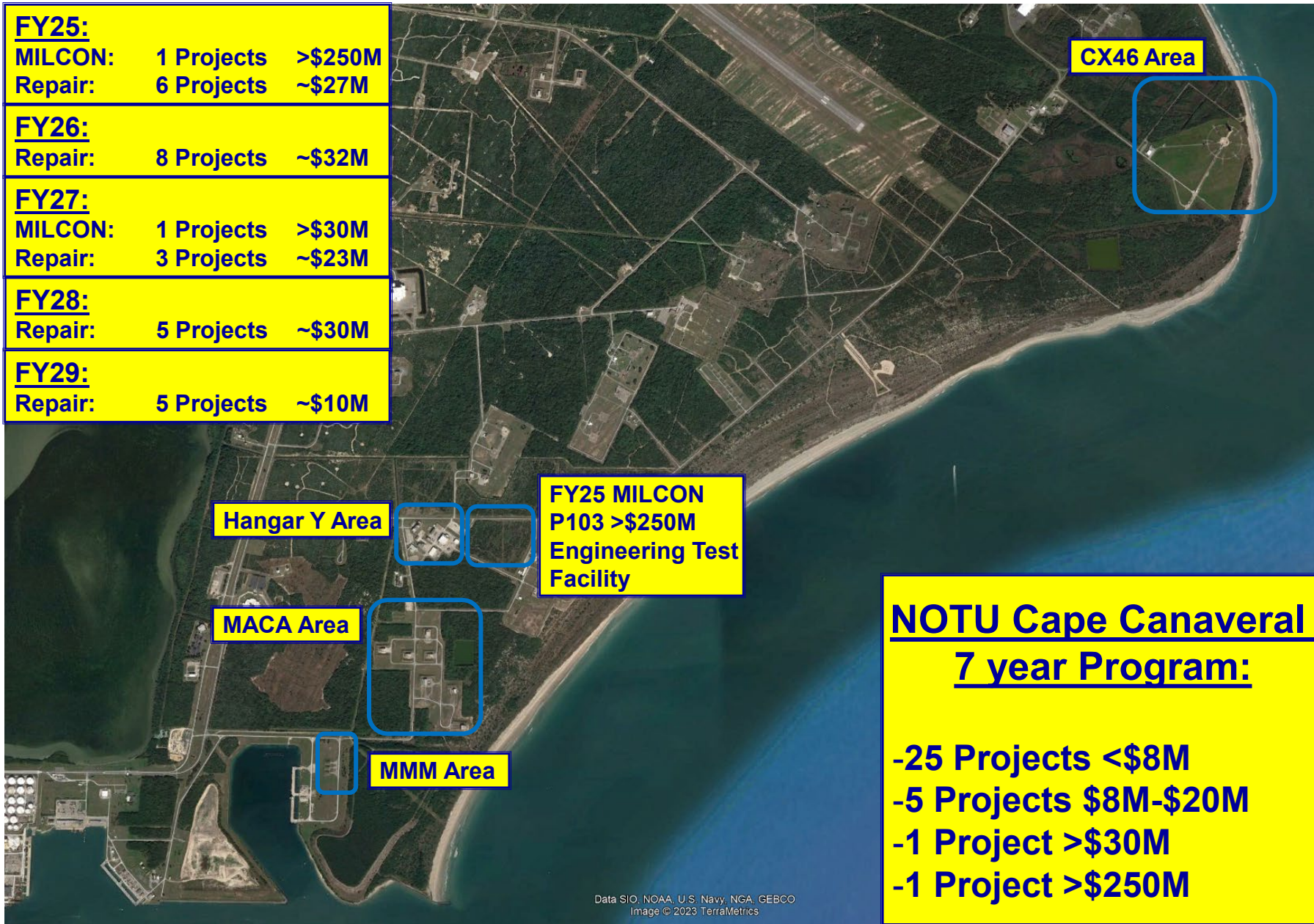


- **Mission through 2084**
  - **Ohio SSBN sustainment**
  - **Columbia SSBN intro**
  - **D5LE2 development**

# Questions?



# NOTU Planned Project Workload FY25 – FY29



<b>FY25:</b>		
<b>MILCON:</b>	1 Projects	>\$250M
<b>Repair:</b>	6 Projects	~\$27M
<b>FY26:</b>		
<b>Repair:</b>	8 Projects	~\$32M
<b>FY27:</b>		
<b>MILCON:</b>	1 Projects	>\$30M
<b>Repair:</b>	3 Projects	~\$23M
<b>FY28:</b>		
<b>Repair:</b>	5 Projects	~\$30M
<b>FY29:</b>		
<b>Repair:</b>	5 Projects	~\$10M

**NOTU Cape Canaveral  
7 year Program:**

- 25 Projects <\$8M
- 5 Projects \$8M-\$20M
- 1 Project >\$30M
- 1 Project >\$250M